



Drytech

Heat pump dryer

Drytech(Guangzhou) Technology Co., Ltd.

Address: Building 3, No. 4 Aimin Road, Xinhua Town, Huadu District, Guangzhou City, Guangdong Province

Email: info@drytech.com.cn

www.heat-pump-dryer.com

www.drytech.com.cn

www.drytechdryer.en.alibaba.com



Whatsapp



Wechat





Drytech(Guangzhou) Technology Co., Ltd is a professional manufacturer focus on development and production of heat pump dryers. The factory has nearly 3000 square meters, has first-class production workshop, production equipment, and advanced simulated climate testing laboratory. It's one of the largest production base of heat pump dryers in China.



Since its inception, Drytech introduced advanced heat pump production and management technology, produced heat pump dryers with excellent quality and superior performance.

Based on many years' experience, the company has won many patents and honor, its product have passed the CCC, ISO, and CE certificates. Drytech always insist on "Credibility first & Customer first" principle, provided professional solutions and good after-sales service to create premium service experience for customers.

CONTENT

What is heat pump dryer 01-05

Working principle

Components

Features

Application

Drytech product series 06-15

Horizontal blowing series

Top blowing series

Close loop series

Cases 16-25

Project

Customers visit Drytech

Shipment

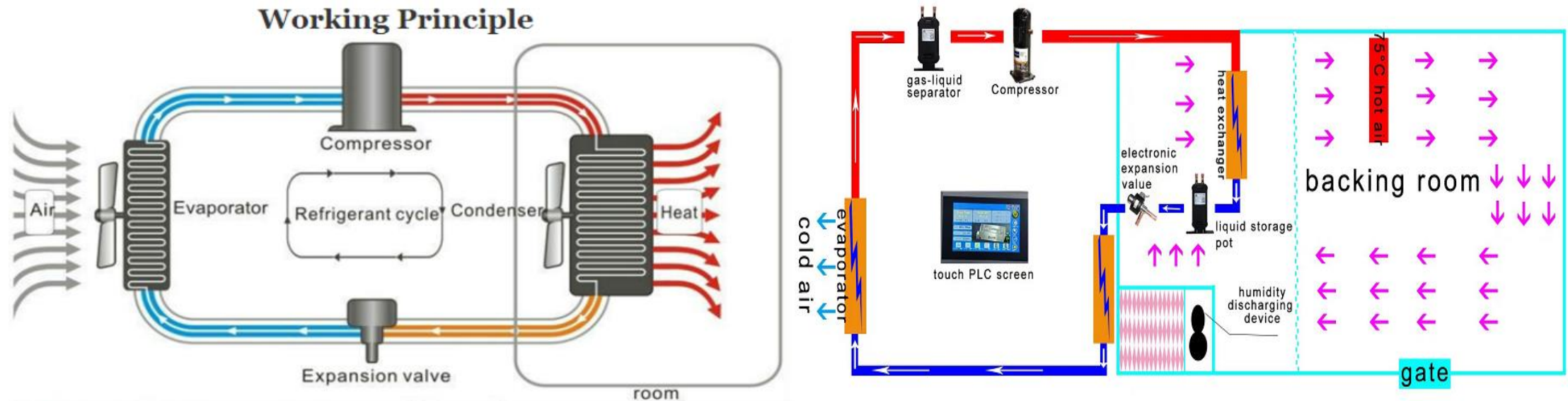
What is heat pump dryer

Heat Pump Dryer is an energy-saving and environment-friendly drying equipment, it works based on reverse Carnot cycle, which has high heating efficient to save energy.

Various Drying Energy Economy Comparison Table						
Heating Mode	Electric Heating	Coal Boiler	Oil Fired Boiler	Gas Boiler	Biomass Stove	Heat Pump Dryer
Remove 1kg of water required heat energy	According to information provided by the relevant authority of the document, the average 1kg of water to remove heat energy required for 1.35kw/kg, namely 4860kj/kg					
Fuel type	Electric	Coal	Diesel	Gas	Biomass	Electric
Heat value	3600kj/kg	23027kj/kg	33494kj/kg	36006kj/kg	17459kj/kg	3600kj/kg
Thermal efficiency	95%	30%	85%	85%	90%	400%
Effective thermal value	3420kj/kg	6906kj/kg	28469kj/kg	30605kj/kg	15713kj/kg	14400kj/kg
Fuel price	0.1\$/kwh	0.1\$/kg	1.2\$/L	0.8\$/m ³	0.2\$/kg	0.1\$/kwh
Fuel consumption	1.42kwh	0.7kg	0.17L	0.159m ³	0.375kg	0.337kwh
Fuel consumption(\$)	0.142	0.007	0.204	0.127	0.075	0.034
Labor management, warehousing costs	Higher	High	High	High	Low	Low
Safer performance	Unsafe	Unsafe	Unsafe	Unsafe	Safe	Safe
Environmental pollution	None	Very serious	More serious	More serious	Light pollution	None
Life of equipment	5-8 years	6-9 years	6-9 years	6-9 years	8-12 years	10-15 years

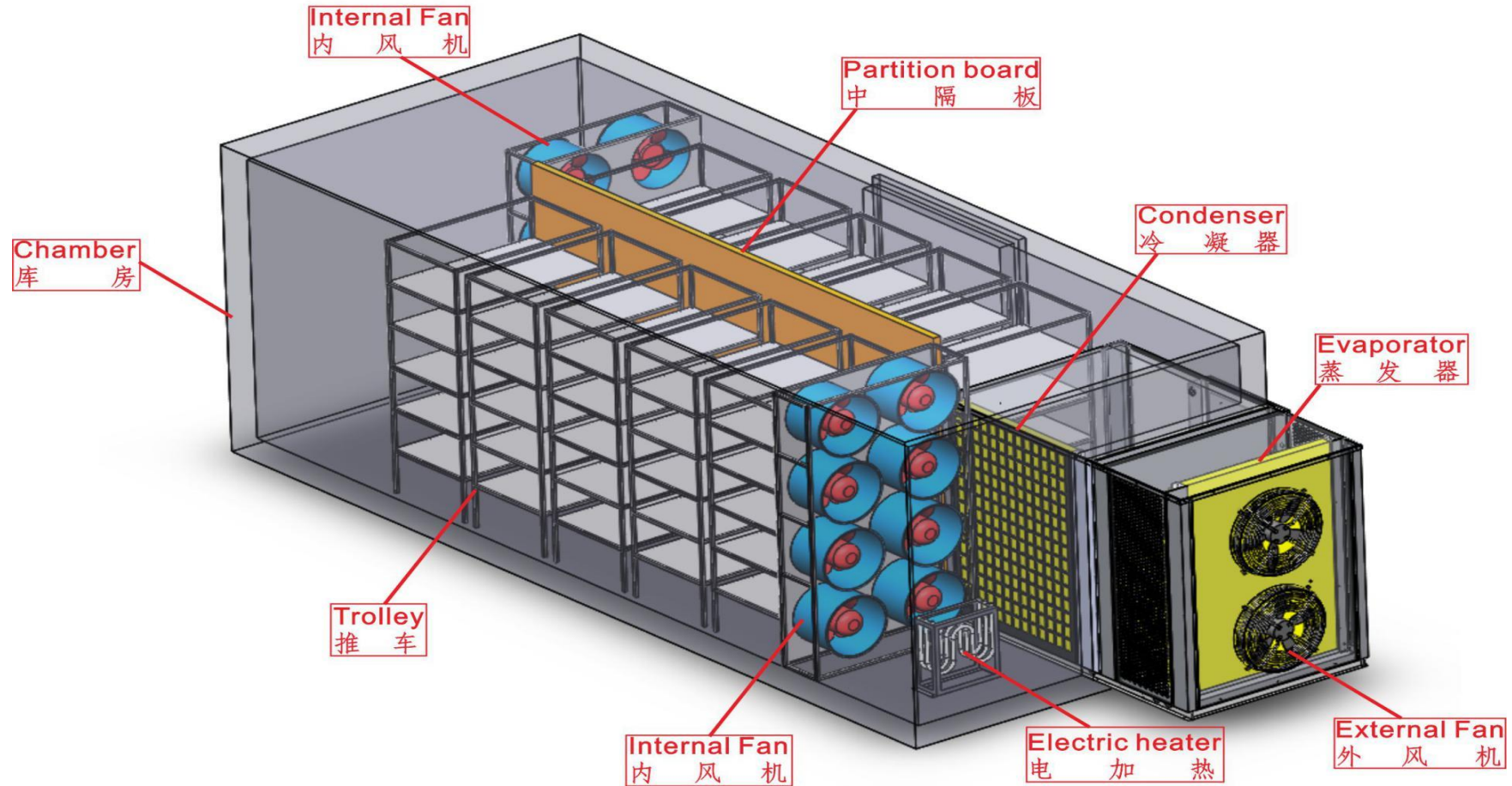
Working principle

Heat pump dryer absorbs heat from ambient air, then the compressor make it to high temperature and high pressure gas. The high temperature and high humidity resistant internal circulating fans transfer the heat from condenser to drying room, and forming a circulating hot air in drying room to evaporate the moisture from raw materials, the water vapor is discharged by moisture exhaust system.



Components

Heat pump drying machine is main consisted of heat pump dryer, drying room, fans, trolleys, trays, and so on.



Features

❖ Environmental protection »

Use environmentally friendly R134a refrigerant, no discharge of poisonous gas, low noise.

❖ Intelligent control temperature and humidity »

PLC+Touch screen, running stable, operating easily. Have sensors to track temperature and humidity conditions, have 10 periods to set different temperature and time, the middle and low temperature drying can reduce the loss of nutrients and physical damage risk, so the quality of material dried with heat pump dryer is better.

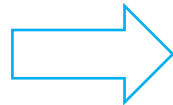
❖ High efficiency »

Adopt multi-stage heat recovery units, which discharges moisture and reuse waste heat at the same time, reducing heat loss caused by exhausting moisture, save energy more than 40%.

❖ Lower operating cost »

Heat Pump Dryer allows unattended operation, the operation cost and labor cost are lower than traditional drying equipment.

Touch screen



Usually there has three working mode:
H-Dry: Heating Drying
HDry+Mois: Heating Drying + Discharge Moisture
C-Dry: Cooling Drying

Application

So far, Drytech's heat pump dryer has been widely used for drying fruits, vegetables, herbs, seafoods, meat, noodles, incense, wood, sludge and some industrial materials, etc.



Drytech product series

At present, Drytech has horizontal blowing series and top blowing series. We provide open-loop or close-loop dryers for warm regions, and close-loop dryers for cold regions.

Horizontal blowing heat pump dryer



Top blowing heat pump dryer

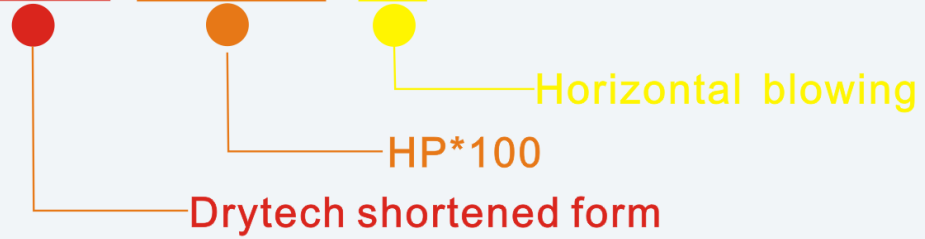




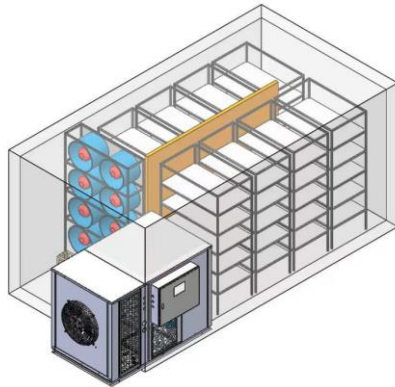
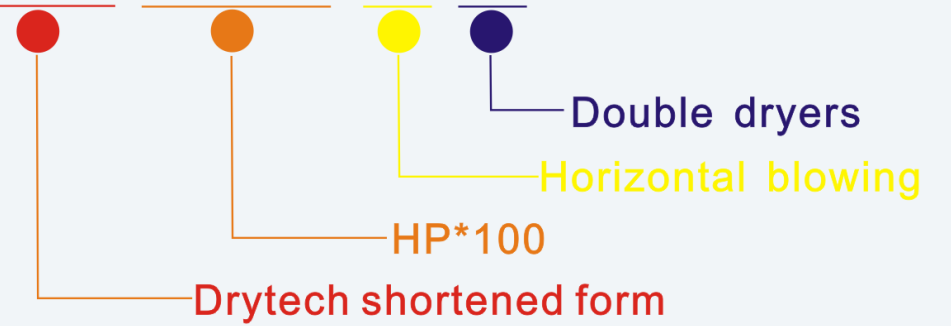
Horizontal blowing series

Model	Power Supply	Power Input (KW)	Chamber Size	Trolleys Q'ty	Trays Q'ty	Remarks
DT100H	220V/1PH, 50/60HZ	1.75	L1655xW1585xH1500mm	1 trolley	36	Trolley size: L1280xW810xH1300mm
DT300H Integrated machine	220V/1PH, 50/60HZ 380V/3PH, 50/60HZ	5.5	L2200xW1950xH2200mm	1 trolley	100	Trolley size: L1710xW1210xH1800mm
DT300H		5.5	L3200xW2190xH2200mm	6 trolleys	96	Trolleys size: L870xW610xH1750mm One trolley with 16 trays Trays size: L800xW600xH50mm
DT300HD		11	L7050xW2190xH2200mm	16 trolleys	256	
DT600H	380V/3PH/50HZ 460-480V/3PH/60HZ	9.5	L6150xW2190xH2200mm	12 trolleys	192	
DT600HD		19.8	L10100xW2190xH2200mm	24 trolleys	384	
DT1200H		19.4	L6350xW3230xH2200mm	20 trolleys	320	
DT1200HD		40	L11860xW3230xH2200mm	40 trolleys	640	
DT1500HD		56.8	L13930xW4670xH2200mm	72 trolleys	1152	

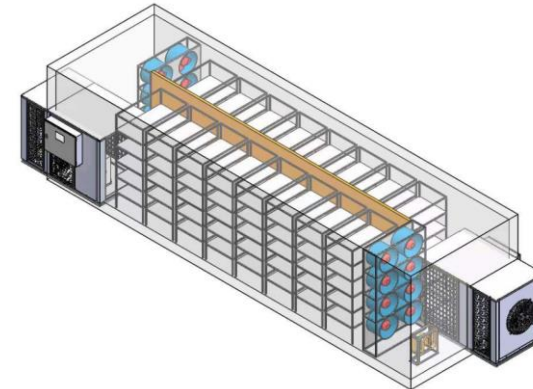
DT300H



DT300HD



DT***H series: one dryer



DT***HD series: double dryers

Among horizontal blowing series, DT100H and DT300H Integrated machine are assembled and tested before delivery, they can be used directly after receive it.

DT100H



DT300H
 Integrated
 machine



About bigger machines, dryers are finished and tested before delivery, we provide installation video, drawing and online service to support customers assemble drying room. Below are packages for shipping:



Heat pump dryer



Fan



Chamber board

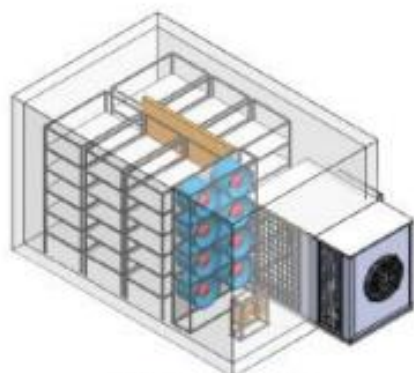


Trolley

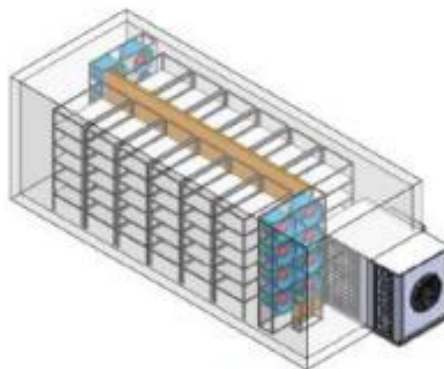


Tray

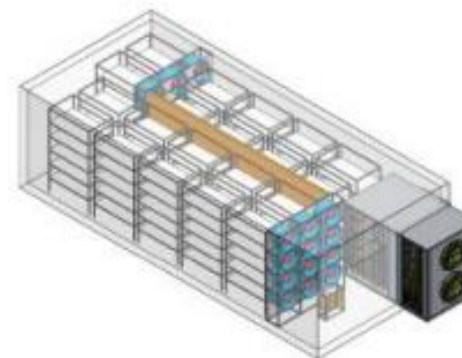
3D drawing of horizontal blowing machines



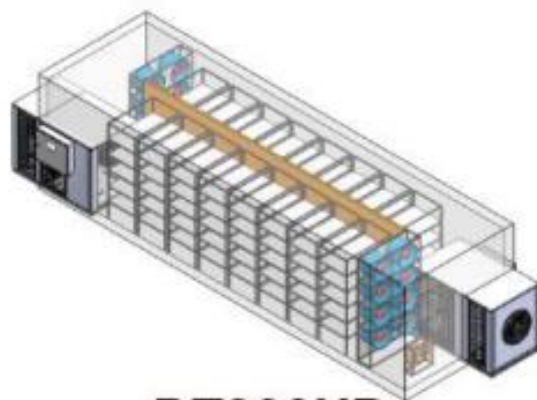
DT300H



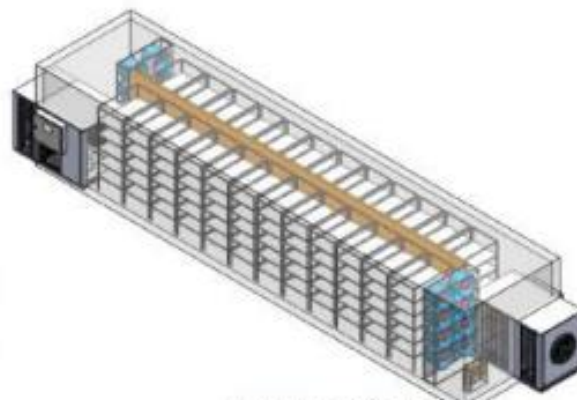
DT600H



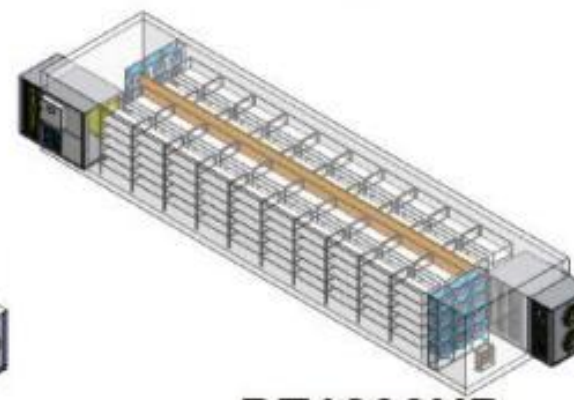
DT1200H



DT300HD



DT600HD



DT1200HD

Project of horizontal blowing machines

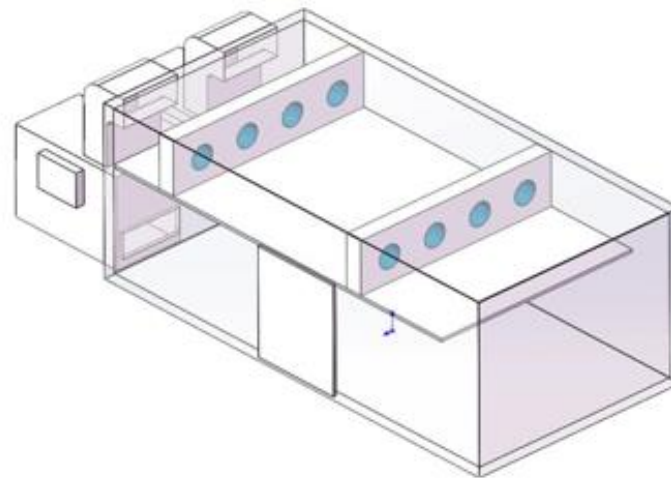
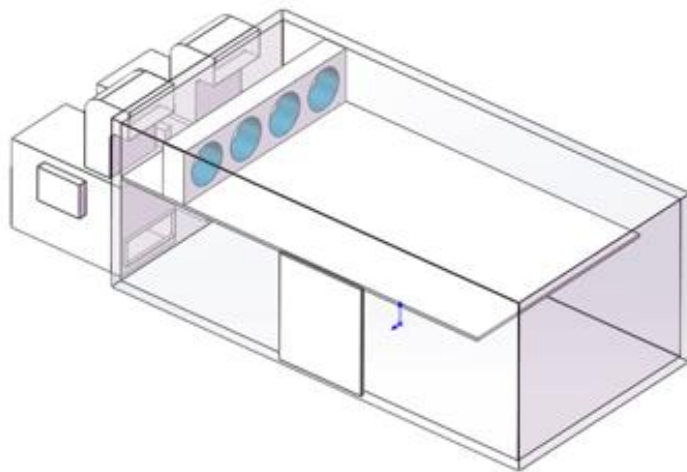
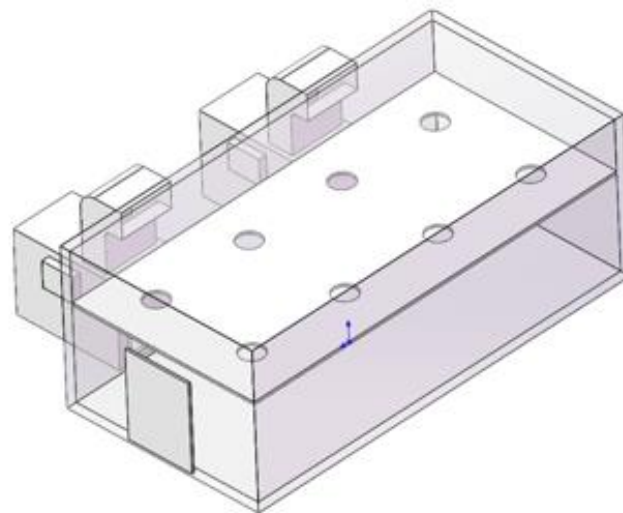
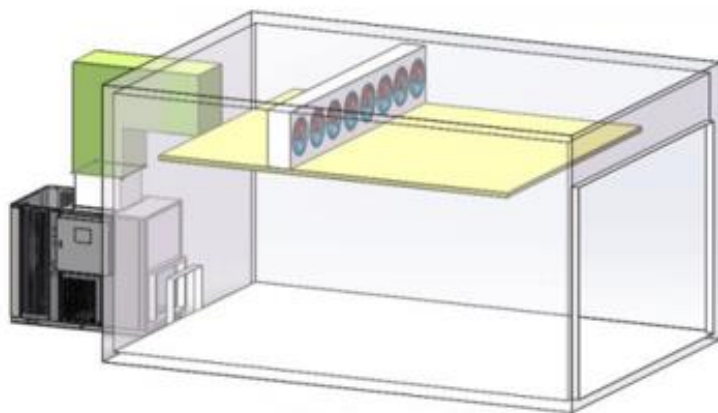




Top blowing series

Model	Unit	DT600T	DT1000T	DT1200T
Power input	KW	6.8	13.5	15.0
Power supply	V/PH/HZ	380V/3PH, 50/60HZ		
Rated current	A	17.0	27.0	30.0
Heating capacity	KW	21.0	35.0	42.0
Cooling capacity	KW	18.0	25.0	32.0
Dehumidify	L/H	25.0	42.0	50.0
Max. temperature	°C	≤75	≤75	≤75
Working condition	°C	0-43	0-43	0-43
Electric shock protection grade	/	1	1	1
Max. exhaust pressure	Mpa	3.0	3.0	3.0
Noise	dB(A)	≤75	≤75	≤75
Power consumption/H	KWH	8.5	13.5	15.0
Electric heater	KW	6	9	12
Blowing type	/	Top blowing		
Dimension of dryer	MM	L1790xW1060xH1660	L2180xW1360xH1990	
Weight	KG	350	480	500

3D drawing of top blowing machines



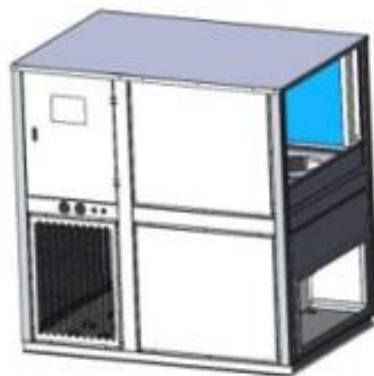


Close loop series

We provide close loop drying machine for cold regions, which drying room's temperature not influenced by environment cold air. For warm regions, if need dry material with low temperature, close loop dryer will be a good choice.

Model	Power Supply	Power Input (KW)	Chamber Size	Trolleys Q'ty	Trays Q'ty	Remarks
DT300H	220V/1PH, 50/60HZ 380V/3PH, 50/60HZ	5.5	L3200xW2190xH2200mm	6 trolleys	96	Trolleys size: L870xW610xH1750mm One trolley with 16 trays Trays size: L800xW600xH50mm
DT300HD		11	L7050xW2190xH2200mm	16 trolleys	256	
DT600H	380V/3PH/50HZ 460-480V/3PH/60HZ	9.5	L6150xW2190xH2200mm	12 trolleys	192	
DT600HD		19.8	L10100xW2190xH2200mm	24 trolleys	384	
DT1200H		19.4	L6350xW3230xH2200mm	20 trolleys	320	
DT1200HD		40	L11860xW3230xH2200mm	40 trolleys	640	
DT1500HD		56.8	L13930xW4670xH2200mm	72 trolleys	1152	

Close loop heat pump dryer



Project of close loop drying machine



Cases Projects

Drying Panax pseudo-ginseng



Drying Panax pseudo-ginseng



Drying red date



Drying dendrobe



Drying maca



Drying worm grass flowers



Drying rhizoma gastrodiae



Drying fig



Drying aniseed



Drying ginseng



Drying white fungus



Drying Purple yam



Drying Morinda officinalis



Drying lily root



Drying Chinese yam



Drying orange peel



Drying chayote slice



Drying Chinese wolfberry



Drying ginger



Drying ginger



Projects

Drying red chilli



Drying red chilli



Drying mushroom



Drying mushroom



Drying balsam pear



Drying bamboo shoot



Drying edible fungus



Drying dried beancurd stick



Drying bamboo shoot



Drying sweet potato slice



Drying brown sugar



Drying noodle



Drying okra



Drying chrysanthemum flower



Drying noodle



Drying noodle



Drying honeysuckle flower



Drying dragon fruit flower



Drying rice noodle



Drying rice noodle



Projects

Drying rice noodle



Drying sweet potato noodle



Drying mango



Drying lemon



Drying sweet potato noodle



Drying sweet potato noodle



Drying mulberry



Drying persimmon



Drying fish



Drying fish



Drying sausage



Drying sausage



Drying shrimp



Drying shrimp



Drying sausage



Drying sausage



Drying longan



Drying mungo



Drying sausage



Drying sausage



Projects

Drying sausage



Drying chicken foot



Drying incense



Drying incense



Drying tobacco leaves



Drying tea



Drying incense



Drying incense



Drying wood



Drying furniture



Drying incense



Drying incense



Drying redwood



Drying redwood



Drying sludge



Drying sludge



Drying wood



Drying rubber glove



Drying sludge



Drying paper tube



Projects

Drying rice noodle



Drying white fungus



Drying rice noodles



Drying incense



Drying sludge



Drying vegetable



Drying Pineapple



Drying Pineapple



Drying chicken



Drying wood



Drying Ginger



Drying orange peel



Drying chrysanthemum flower



Drying redwood



Drying pineapple



Drying rose



Drying Morinda officinalis



Drying Citrus tea



Drying apricot kernel



Drying cigar



Projects

Red tangerine peel, Huazhou



Oil tea seed, Yunfu



Sweet potatoes



Bamboo shoot



Paper tube, Zhongshan



Aniseed, Baise, Guangxi



Vegetable



Okra



Jasmine flower, Tengxian, Guangxi



Sheepskin, Jiangmen



Orange peel



Mushroom



Orange peel, Jiangmen



Solid waste, Zhejiang



Longan



Chrysanthemum



Chilli, YunNan



Sweet potato, Guangzhou



Persimmon



Walnut



Projects

Sausage, Sichuan



Fish, Fujian



Rose, Hunan



Mushroom, Yunnan



Shrimp, Guangdong



Fish, Guangdong



Waxberry, Fujian



Pumpkin, South America



Sea fish, Zhanjinag



Paper tube, Guizhou



Paper tube, Guangdong



Paper tube, Hunan



Incense, Jiangmen



Incense, Guizhou



Paper tube, Fujian



Paper tube, Guangdong



Wood board, Hunan



Waste solid, Suzhou



Buleberry, Guizhou



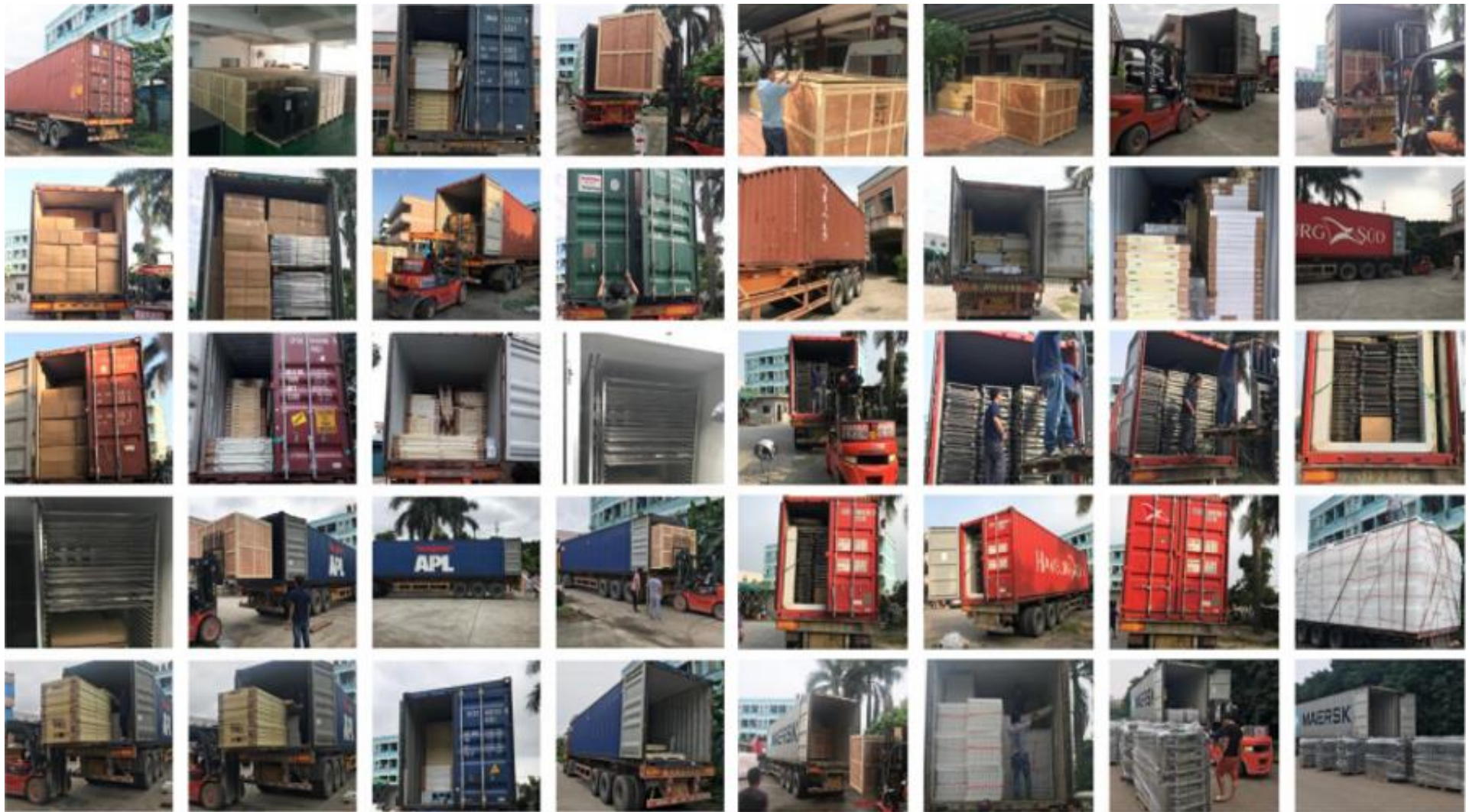
Pumpkin, Honduras



Customers visit Drytech



Shipment



Shipment

